



R-010099

**ARTICULATOR “ARCON”
SEMI-ADJUSTABLE WITH CASE**



MESTRA®

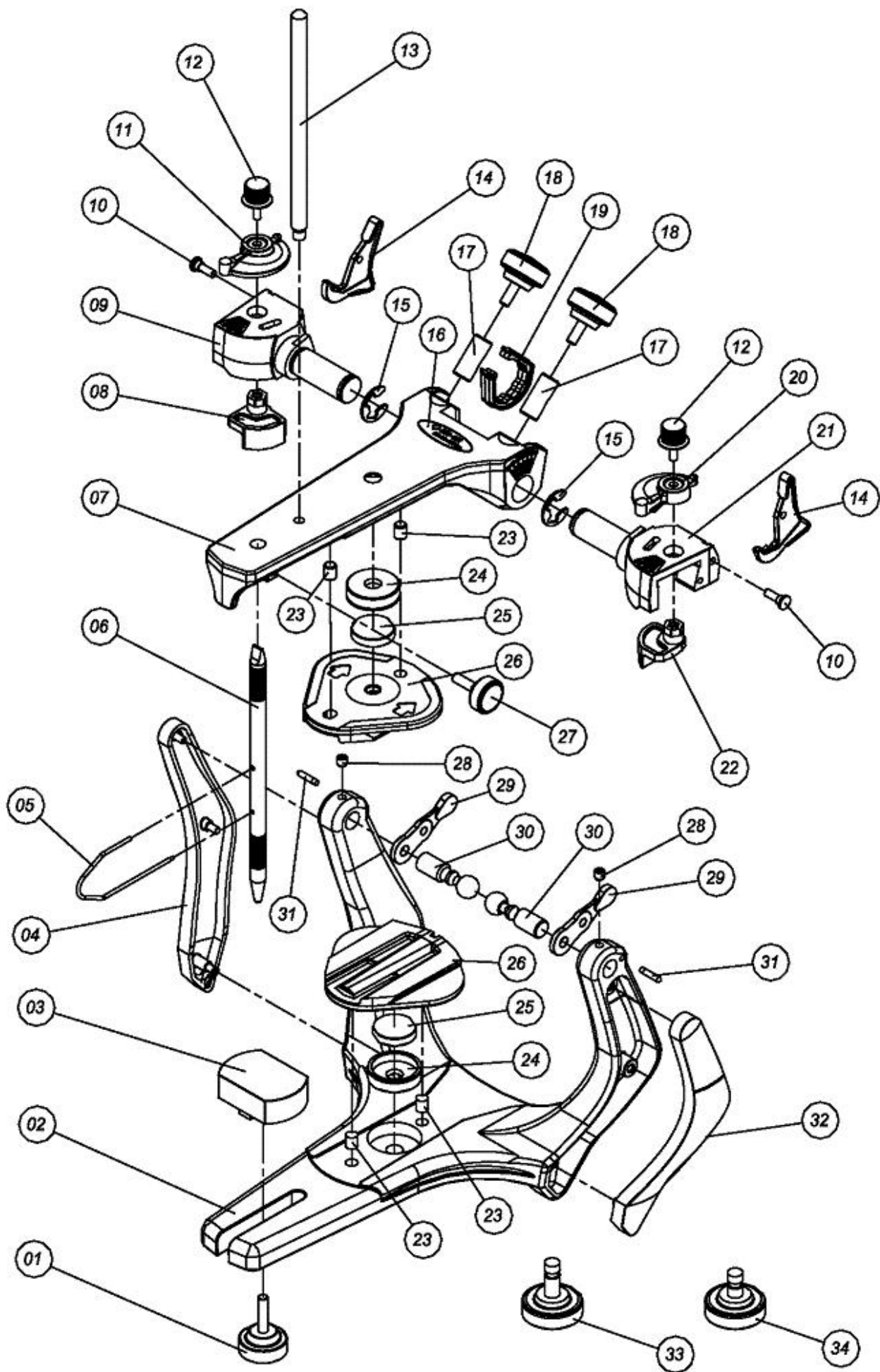
TALLERES MESTRAITUA S.L.

Txori-Erri Etorbidea, 60

48150 SONDIKA - BILBAO - ESPAÑA

Tfno. + 34 944530388 - Fax + 34 944711725

E-mail: mestra@mestra.es - www.mestra.es



Nº	Description
1	Incisal table screw
2	Lower frame
3	Incisal table (acrylic)
4	Finishing cover of right column
5	Occlusal plan indicator
6	Incisal pin with hole
7	Upper frame
8	Bennett angle adjusting device (Right)
9	Condylar guide (right)
10	Stabilizing elastic band pin
11	Position indicator of Bennett angle adjusting device (right)
12	Screw to fix the Bennett angle adjusting device
13	Upper frame support pin
14	Lock of upper frame
15	Condylar guide O-ring
16	Model identification label
17	Condylar guide fixer
18	Condylar guide screw
19	Pulley finishing cover
20	Position indicator of Bennett angle adjusting device (left)
21	Condylar guide (left)
22	Bennett angle adjusting device (Left)
23	Mounting plate guide pin
24	Magnetic fitting
25	Mounting plate magnet
26	Mounting plate (track) (2 U.)
27	Incisal pin screw
28	Condylar element screw
29	Stabilizing elastic band
30	Condylar element
31	Face bow's guide pin
32	Finishing cover of left column
33	Mounting plate screw (lower frame)
34	Mounting plate screw (upper frame)



DEAR CUSTOMER

This manual is a general presentation of your product and it will give you important details to help you to solve possible problems.

Please, read it and keep this with you.

Attention: Before using your articulator, please read carefully all the Instructions Manual.

Attention: The use of the equipment by professionals not qualified can cause damage or harm to the product and/or patient.

PRODUCT DESCRIPTION

The articulator is an instrument used to simulate the maxillo-mandibular relation and movements of a patient in a laboratory, with the purpose of studying the occlusion and production of dental devices that will be used by the patient. These devices include complete dentures, partial dentures, bridges, crowns and bite plate, among others.

This Manual contains only basic and simplified information regarding the use of the equipment, which do not replace the need of a specific course of Occlusion and/or Prosthesis, offered in many Teaching Institutions and Dental Faculties, as a compulsory discipline.

The articulator is restricted to qualified professionals.

It is important to emphasize, however, that the R-010099 articulator provides a simple, fast and highly precise way of reproducing the human mandible movements, enabling the dental professional to carry out corrective and restorative dentistry tasks more easily, rapidly and at lower costs than those of traditional, time-consuming techniques involving expensive and highly complex equipment. Furthermore, the semi-adjustable articulator produces far more accurate results than those produced by "simple hinge" articulators, which involve arbitrary mounting of the mandibular cast on the device and whose movements are also limited.

The use of the semi-adjustable articulator is therefore recommended for most prosthetic, occlusal and rehabilitation work. The technique is simple, fast and easy, offering highly satisfactory results for both the patient and professional.

MOUNTING THE CASTS ON THE ARTICULATOR

Preparing the articulator

The adjustments of the articulators mentioned below are only used to mount the casts on the articulator. However, the professional may choose to use other angulation techniques to personalize the settings.

To facilitate the mounting of the casts, adjust the Condylar Guides angles at 30° and the Bennet at 0° (fig. 01 and 02). Then push back the upper part of the central lock until feel the “click” (locked position fig. 03).

PS.: In order to make sure that the articulator is totally locked at the centric position, check if the 2 locks (left and right) are at the locked position.



Fig. 01



Fig. 02



Fig. 03

Interocclusal registration

To set up the mandibular (lower) cast in the articulator, you should have a record correlating the upper and lower dental arches, according to the purpose of the mounting, in one of the following ways:

Maximum Intercuspatation (MI);

Centric Relation (CR);

These records can be made using material of the operator's preference: wax, resins, addition or condensation silicon, etc. (fig. 04 and 05).

To obtain the M.I registration, place the selected material to register the patient's arcade and ask him to occlude.

There are several techniques to obtain the R.C registration, i.e. Peter Dawson's technique (bilateral manipulation of the mandible), Lucia's JIG technique and James Long (use of plastic spacer) among others.



Fig. 04



Fig. 05

Note: For totally edentulous patients, this registration is made when the upper and lower wax rollers are joined based on the correct dimensions of the patient.



Fig. 06



Fig. 07



Fig. 08



Fig. 09



Fig. 10

Mounting the mandibular cast

- a) Place the Incisal Guide Pin in the Upper Frame of the articulator with its rounded tip pointing downward so that the upper and lower frames are parallel, i.e. on the zero marking of the Incisal Guide Pin (fig. 06).
 - b) Now turn the articulator upside down on the laboratory bench and affirm the lower cast, with retentions and previously hydrated, upon the interocclusal register that should be placed in the mounted upper cast (fig. 07). In totally edentulous patients, this was obtained by joining the wax rollers together.
 - c) We recommend fixing the casts with rubber bands or staples (fixed with "godiva" or wax) so that they remain in position until the plaster hardens. Place a small amount of plaster on the lower part of the mandibular cast and a small amount on the mounting plate of the lower frame of the articulator to fill in the gap between them (fig. 08).
 - d) Make sure the condylar elements are duly positioned and close the lower frame until the Incisal guide pin touches the Incisal table. Afterwards, fasten the articulator frames using rubber bands to prevent possible distortion occurred by the plaster expansion (fig. 09)
- Note:** The sides of the mounting plates, which are in contact with the articulator frames, should be devoid of plaster.
- e) After the plaster hardens, turn the articulator back to its upright position (lower frame resting on the laboratory bench) and complete the work, filling the cast fixation towers with plaster for the finishing touches (fig. 10).

Features of the railmounting plate

The possibility of reusing the Mounting Plate without breaking the model requires care with the side finishing of the plaster on the plate, i.e., the plate should not have plaster at the lateral border (fig. 11).

In order to take off the model, the plaster should be removed of from the retention hole (picture 12) and then the model should be hold while tapping the plate towards the indicated arrows located on the lower face of it (fig. 13).

PS.: Once the model has been taken off the Mounting Plate, we can not guarantee the returning of it in the initial position with precision, since it depends on the technical quality of the work and the materials used (especially the plaster).



Fig. 11



Fig. 12



Fig. 13

MAINTENANCE AND CLEANING

- This manual only contains basic and simplified information regarding the use of the instrument and under no circumstances it is a substitute for a proper training course. The articulator and face-bow are products aimed at the exclusive use of qualified dental Professionals.
- The R-010099 articulator is not interchangeable, i.e. the casts mounted on one articulator model should not be transferred (mounted) to any other articulator. Therefore, Mestra does not guarantee precision when casts mounted on one articulator are transferred to another.
- Before using the articulator, the professional should check the instrument for possible damage, distortion of the incisal pin, face-bow's parallelism, proper centricity of the incisal pin in relation to the lower frame, etc. Should any abnormality be found, contact your distributor.
- Mestra recommends only warm water for the general cleaning of the articulator.
- When using "godiva" or any other registration material, special care should be taken to avoid excessive heating of the material, which might burn the patient's mouth. Mestra urges the user to carefully follow the instructions of the registration material manufacturer.
- Because the articulator is a precision instrument, it should be handled, transported and stored carefully. Use the plastic case.



MESTRA[®]

TALLERES MESTRAITUA S.L.

Txori-Erri Etorbidea, 60

48150 SONDIKA - BILBAO - ESPAÑA

Tfno. + 34 944530388 - Fax + 34 944711725

E-mail: mestra@mestra.es - www.mestra.es