

The art of painting ceramics.



*initial*TM
Painting Solutions

Lustre Pastes NF
Spectrum Stains

'GC.'



Paint your aesthetics with Initial™ from GC

GC offers the Initial users the most modern and highly aesthetic paintable ceramic solutions. Depending on the case and desired properties, two product lines, Initial Lustre Pastes NF and Initial Spectrum Stains, will provide the expected outcome. They are suitable for a wide CTE-range allowing you to work with the complete GC Initial ceramic range and nearly all types of other ceramics.

Initial Lustre Pastes NF, the unique 3D paintable ceramics from GC, bring depth and authenticity to all your precious works ... just by painting. You no longer need complex layering or extra firing cycles to obtain an unsurpassed vitality and a natural glaze for all your restorations.

Initial Spectrum Stains offer a 2D staining effect and can be used for internal as well as external staining. They will provide a very refined end result with a glossy surface while conserving the texture.

Both products are complementary. In some cases they are used both; for example, the Spectrum Stains can be added to the Lustre Pastes NF or to the ceramic build-up powders.



Compatibility with the Initial ceramic line



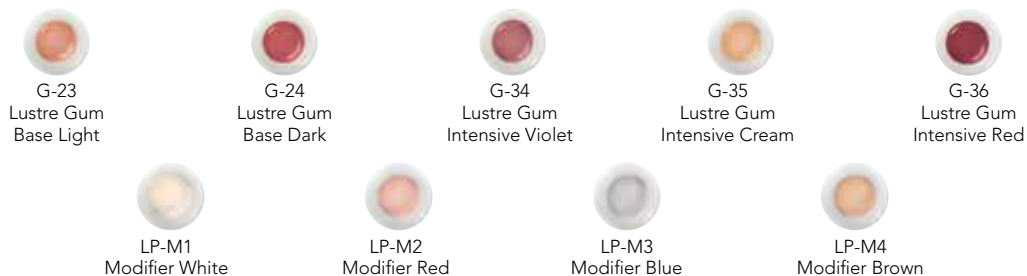
Lustre Pastes NF V-Shades

With the "Body A-D" shades, the required V-shade can be obtained very easily and in no time. With the other available colours, you can further characterise the restorations for a perfectly assimilated end result.



Lustre Pastes NF Gum Shades

The Gum Shades are based on a thoughtful selection of non-fluorescent, pink coloured ceramic particles to perfectly mimic the look of natural gums. A lifelike transition from the crown margin to the gingiva can easily be achieved.



Spectrum Stains

The stains and glaze are developed for the external staining and glazing of tooth-coloured ceramic materials and internal individualisation of layering ceramics. Compatible to a wide CTE-range, the Initial Spectrum Stains are perfectly adapted to fit on nearly all types of dental ceramics. In particular they are adapted to the aesthetical colour concept of the Initial ceramic portfolio.

Initial Spectrum Stains are powder stains available in a variety of 16 colours empowering the aesthetics of your restorations.

Regardless the way of application, a very fine end result will be obtained maintaining the surface texture and assuring an optimal gloss level.



Skin deep beauty with Initial Lustre Pastes NF

The perfect finish to your restorations

You no longer need complex layering or extra firing cycles to obtain an unsurpassed vitality and natural glaze to all your restorations.

With Initial Lustre Pastes NF, you can have colour deepness and lifelike translucency ... just by painting.

Initial Lustre Pastes NF are based on a special mix of fine ceramic particles. The steps to complete your workpieces remain identical, regardless of the technique used to create the base.

By using the diluting liquid, the optimal consistency is kept until the end.

The required V-Shade is created by application of the Lustre Pastes NF "Body A-D". This process comprises everything that is needed to create V-shades in no time.

For enhanced characterisation, simply use the other available colours to create highly aesthetic results.



Base



Application of LP Neutral



Application of Body Shades



Final Restoration showing colour and gloss

Easy modifications

With Initial Lustre Pastes NF you can easily modify your workpieces.

Changing colour, brightness, grey value or adding extra surface gloss has never been so easy!



Brightness



Colour



Grey value

“Paint-on ceramics
allow a concrete
representation of
the most subtle
emotions.”

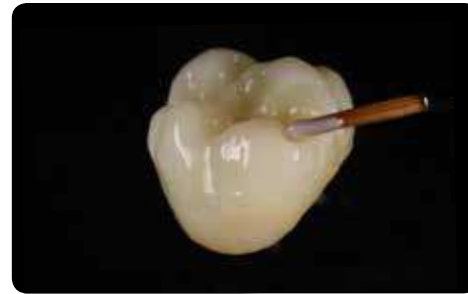


Add character to your one body restorations ...

The unique consistency ensures homogeneous modifications and appearance. The requested surface texture/smoothness of the Lustre Pastes NF layer can be obtained by gently vibrating or condensing the restoration. No complex layering or extra firing cycles required; it is fast, easy and secure. The pastes are ready-to-use with a fine thixotropic property, for easy and precise application.



Full anatomical frameworks in lithium disilicate such as LiSi Press can be individualised with Lustre Pastes NF.



Looking for a way to add extra vitality to your CAD/CAM produced zirconia monolithics such as with Initial Zirconia Disk? Lustre Pastes NF are the solution in any case.



With the GC Initial IQ-OneBody, Press-over-Metal or Press-over-Zircon systems, the characteristics and gloss can be added in just one firing cycle.

... or embed them in the layers for in-depth effects.



Cut back



Application of Lustre Pastes NF (+firing)



Application of Opal/Incisal Masses (+firing)



Final result

Achieve the most outstanding aesthetic results by using the Initial Lustre Pastes NF in the cut-back technique with your pressed or layered workpieces. After painting with Lustre Pastes NF, the finishing touches are done with dedicated GC Initial veneering ceramics: CL-F for high translucency and Opal and Enamel masses for incisal effects.



Paint your red and white aesthetics ...

Two sets, one approach.



Starting point



Application of the different Initial Lustre Pastes NF Gum Shades



Characterisation with V-Shades



Final result



... with lifelike transitions, even on zirconia frameworks.



With the increasing popularity of zirconia and CAD/CAM produced restorations, GC offers solutions to maintain the same aesthetic standards. Your monolithics will look natural and vibrant with Initial Lustre Paste NF. Their unique composition offers more interaction with the underlying ceramic material and acts optically like ceramic build-up powders, boosting the 3D effect of your restoration. Simplicity can be beautiful!



Widen your staining possibilities with Initial Spectrum Stains

Initial Spectrum Stains contain pigments that are sintered inside a feldspar matrix for stability and to allow reproducible, consistent results. You can vary and play endlessly with the Initial Spectrum Stains. Use them for internal as well as external staining. They can also be added to the ceramic masses or to the Initial Lustre Pastes NF to increase the possibilities even more!

Two consistencies, both preserving texture

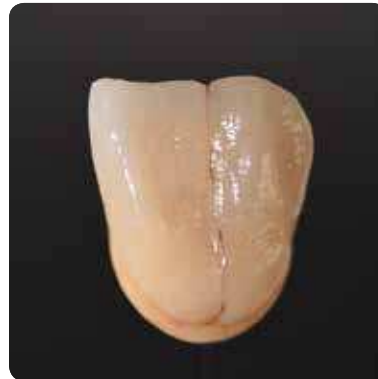
Initial Spectrum Stains can be applied in the user's preferred consistency, as a paste or more liquid. Regardless of the used consistency, the end result will be the same: staining and gloss with very fine definition, preserving the surface texture of the restoration; they are the 2D counterpart of the Initial Lustre Pastes NF.



Crown with fine texture ready to be glazed



Glazing with liquid or paste consistency



After firing: stained and glazed with preservation of fine texture



Stain internally ...



... or externally



2D and 3D ceramic painting solutions ... from GC

GC Initial Lustre Pastes Set NF - V-Shades

- 4 Body Shades and 1 Neutral to achieve a V-shade restoration in the easiest way.
- 9 Effect Shades to release your artistic potential and paint white spots, decalcifications, hair lines and crack lines.

Set composition:

1x Neutral (4g)
1x Value (4g)
4x Body Shades (4x4g)
8x Enamel Effect Shades (8x4g)
1x Diluting Liquid (8ml)
1x Refreshing Liquid (8ml)
1 Mixing dish
2 Brushes
Colour Chart
Technical Manual



Lustre Enamel Effect 9 (Deep Orange) and 10 (Twilight) are not part of the set but can be ordered separately.

GC Initial Lustre Pastes Set NF - Gum Shades

- 5 ready-to-use gum coloured pastes with an ideal thixotropy for easy and precise application.
- 4 mixable Gum Modifiers allowing unlimited creativity to copy natural gingival harmony.

Set composition:

5x Gum Shades (5x4g)
4x Stain Modifier for LP NF (4x3g)
Diluting Liquid (8ml)
Refreshing Liquid (8ml)
1 Mixing dish
2 Brushes
Colour Chart
Technical Manual



GC Initial Spectrum Stains

- 16 powder stains empowering aesthetic refinement.
- Two consistencies with a refined end result, preserving texture and rendering an optimal gloss level.

Set composition:

16x Initial Spectrum Stains SPS (16x3g)
1x Initial Spectrum Glaze Powder GL (10g)
1x Initial Spectrum Glaze Liquid (25ml)
Initial Spectrum Glaze Paste Liquid (8g)
Initial Spectrum Stain Shade Guide



GC EUROPE N.V.

Head Office
Research Park
Haasrode-Leuven 1240
Interleuvenlaan 33
B-3001 Leuven
Tel. +32. 16. 74. 10.00
Fax +32. 16. 40. 48. 32
info.gce@gc.dental
www.gceurope.com

GC UNITED KINGDOM Ltd.

Coopers Court
Newport-Pagnell
UK-Bucks. MK16 8JS
Tel. +44. 1908. 218. 999
Fax +32. 1908.218.900
gc.dental
uk.gceurope.com

GC