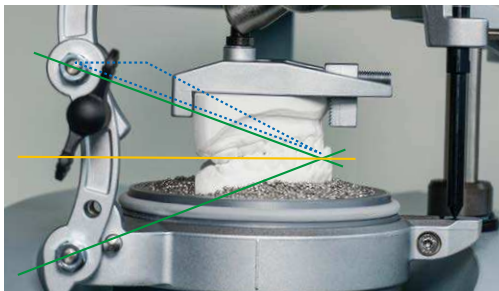


# Occluform-3 Installation and instructions

**Occluding device to imprint the opposing bite during thermoforming.**

Suitable for the units Erkoform serie 3.



The construction of the Occluform-3 device is based on a Bonwill triangle with a side length of 11.5 cm (dashed triangle) and a Balkwill angle of 20°.



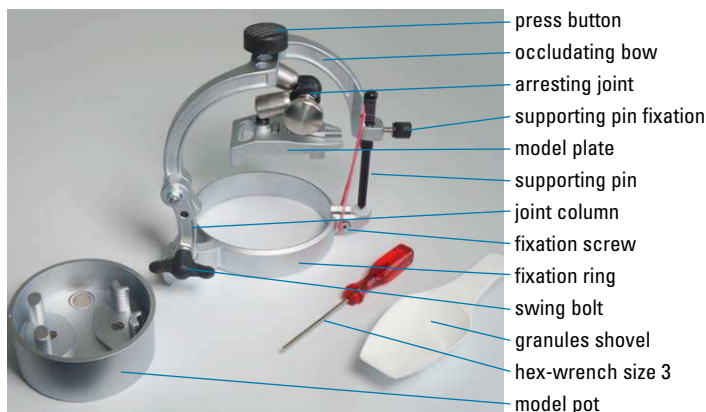
Open package and remove supporting cardboards.



Remove device parts and accessories and check for completeness.

**Occluform-3, order number: 188 580**

Pre-assembled: model pot and occluding device • Accessories: granules shovel and hex-wrench size 3.



**!!Warnings:**

**Never** lubricate or grease the joint surfaces!



**Never** lubricate or grease the articulations!



Joint position ex works, this position is the best starting position to articulate the models.



**Installation instructions:**

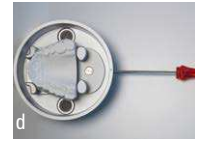
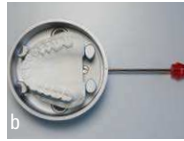
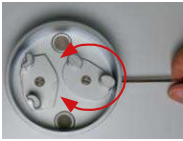
Put the fixation ring crossways onto the form pot and press it downwards to the limit stop (supporting pin to the right).



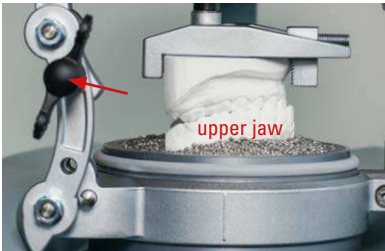
Align marking line of the fixation ring to the point at the form pot.



Press fixation ring downwards and tighten the fixation screw with the hex-wrench.



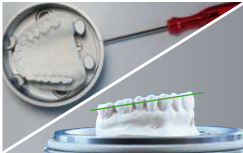
**Model pot:** turnable clamping plate, position for the most models (a + b) and for small models (c + d).



**Hint:** The construction dimensions of the Occluform-3 allow a bite elevation at average values. The elevation of 1 line at the supporting pin corresponds to approx. 1 mm bite elevation at the incisal point. If a construction bite is at disposal the models are articulated in the Occluform-3 using this construction bite.

Picture left, **important hint:** If the **upper jaw** model is placed in the model pot, block **the upper joint** of the joint column with the joint screw (arrow) (as shown on the picture). If the **lower jaw** model is placed in the model pot, block **the lower joint**.

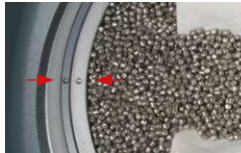
### Imprinting the opposing bite for the fabrication of an adjusted splint.



1. Clamp the model onto which the plate shall be thermoformed into the model pot (hex-wrench). It might be recommendable to clamp the model distally slightly declined.



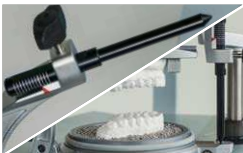
2. The model part that shall be moulded has to protrude beyond the edge of the pot. Fill pot with granules, shake the pot to ensure that the granules will also be spread underneath the model.



3. The unit form pot has to be free from for ex. granules, insert the model pot with model. The model pot is locked into position when the marking points are aligned (arrows).



4. Slightly fix the arresting joint in the top position. Open the occluding bow and clamp the opposing bite model into the upper model plate (hex-wrench).



5. Adjust the supporting pin to the thicker 0-line. Close the occluding bow (avoid collision of the models). To articulate the models hold the upper model plate ...



6. ... and open the arresting joint. Move the model with the model plate downwards until the models articulate (with or without construction bite).



7. Hold and firmly fix the arresting joint. If no construction bite is available, the bite can be lifted with the supporting pin (see hint).



8. Open occluding bow.

Thermoform, as soon as the plate is adapted close the occluding bow.



9. Imprint the opposing bite until the supporting pin gets contact. After slightly pressing on unhand the occluding bow again.



10. After running of the cooling time completely open the occluding bow and release the foil securing ring.

11. Lift foil reception at its handle with model and model pot. Remove model and model pot through the foil reception.

12. In a bowl release model from the model pot. Remove model and thermoformed plate from the model pot.